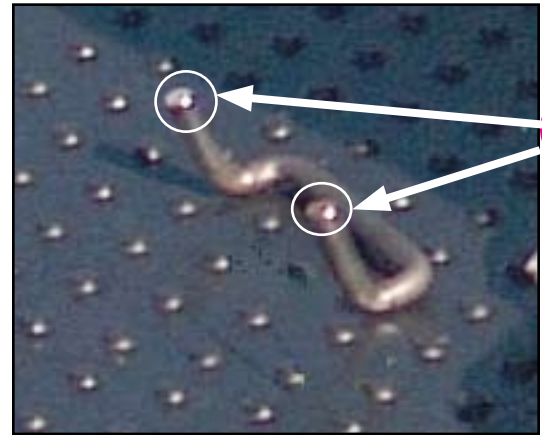


# TRAKMAT® All Steel Connector (ASC) Installation Guide



Installation can be accomplished by one worker.



Step 1: Supply of All Steel Connectors (ASC)



Step 2: Use ASC End to lift Mat if necessary to fit connector.



Step 3: Place ASC Ends into Mat



Step 4; Push ASC into both holes and flip ASC Ends under mat.



Step 5: Weight stabilizes connector under mat.