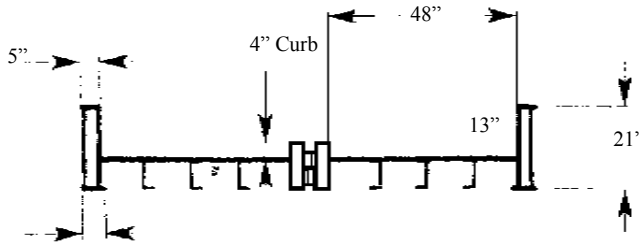
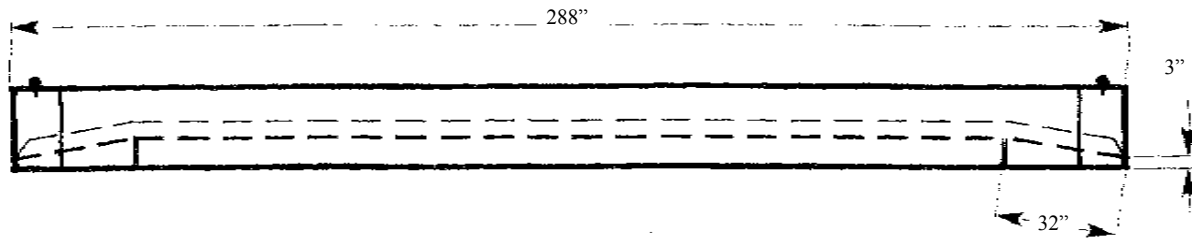


# DITCH BRIDGE SPECIFICATIONS

## 24' Bridge

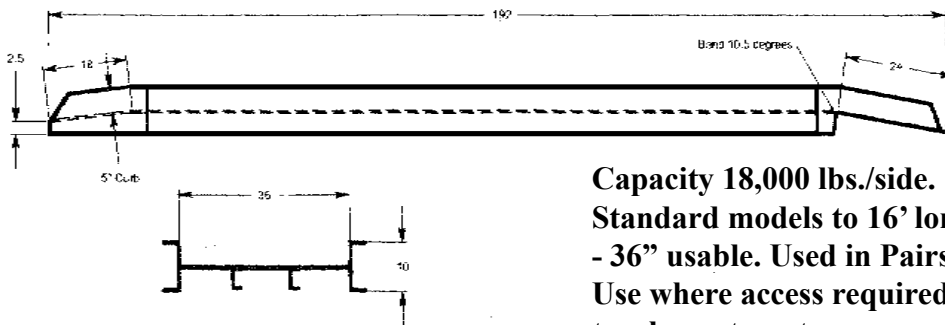


Capacity 24,000 lbs/ side.

Standard Models 24 Feet Long.

Two sections link together form a solid bridge with a usable width of 9'. Inside rails are 5" high, outside rails are 13" high. Outside rails prevent vehicles from driving off the bridge.

## Low Profile Bridge



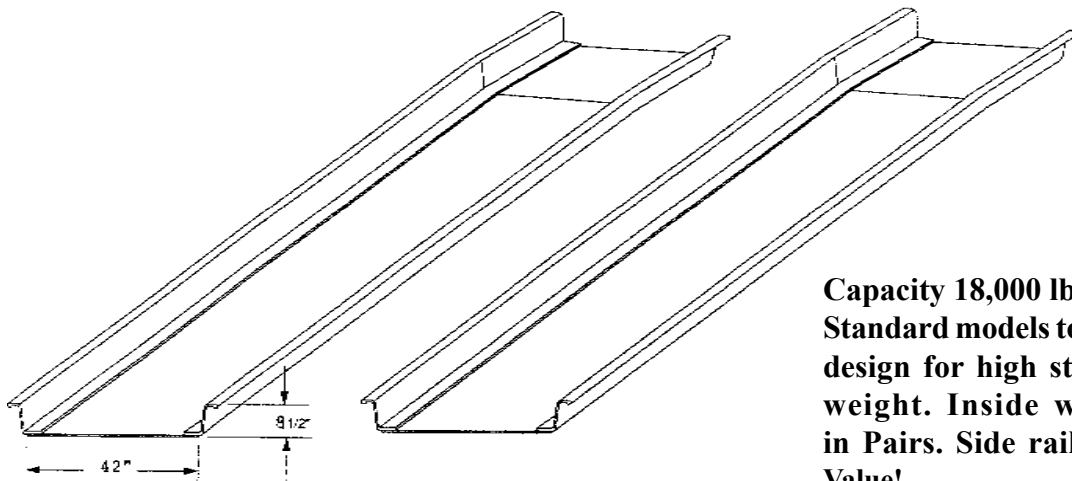
Capacity 18,000 lbs./side.

Standard models to 16' long. 42" overall width

- 36" usable. Used in Pairs. Side rail, 5" high.

Use where access required by line trucks, Pickup trucks, autos, etc.

## Arched Bridge



Capacity 18,000 lbs./side

Standard models to 16' long. Arched design for high strength and light weight. Inside width 42". Used in Pairs. Side rails, 8 1/2" high. Best Value!

**THE**

# **DITCH BRIDGE**



## **The DITCH BRIDGE Series**

All aluminum construction. Aircraft grade material for high strength and light weight.

No RUST! No PAINTING required.

NEW! Standard models to 24' long.

NEW! Models with lower side rails allowing clearance for almost any vehicle.

Standard Heavy Duty Models for vehicles up to 65,000 lbs.

### **WHEN YOU'VE GOT TO GET THROUGH!**

#### **DITCH BRIDGES:**

Are engineered to do the job safely unlike field fabricated bridging which is high risk.

The fast way to cross ditches, creeks, trenches, etc.

Lift in place with trucks you already have.

Prevents environmental damage and reduces or eliminates permit requirements.

Custom design available for special application.

Please Give Us a Call.



**PORTABLE ROADWAY SYSTEMS, INC.**

6128-F Brookshire Blvd  
Charlotte, NC 28216  
Fax (704) 398-0540

**800.762.8267**

**www.mudtraks.com**  
e-mail: sales@mudtraks.com